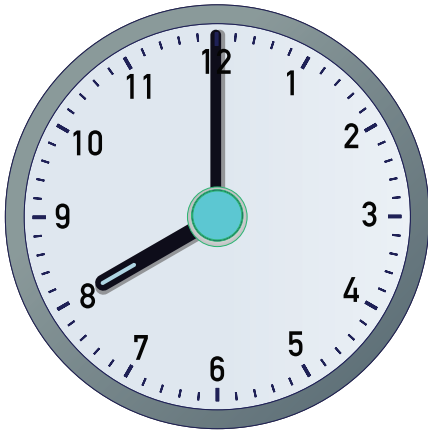
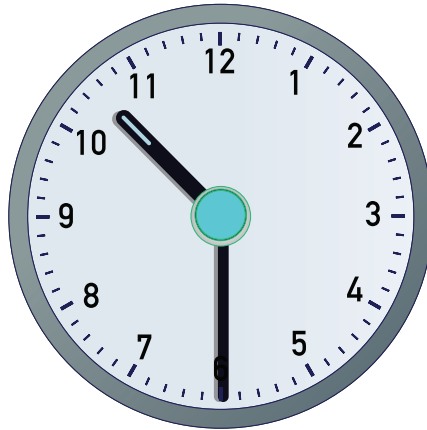


Telling Time in Spanish Worksheet

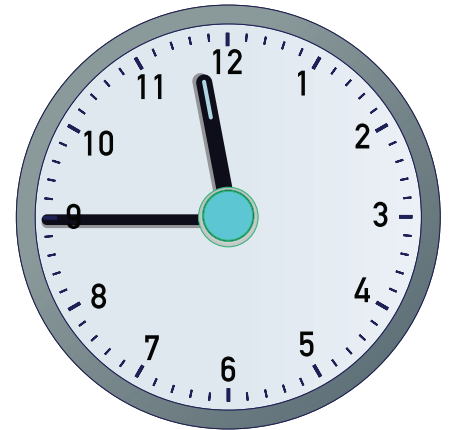
Fill in the blanks with the times of day in Spanish.



It is 8:00 o'clock.

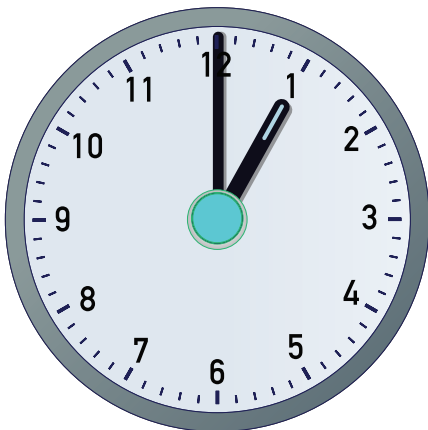


It is 10:30.

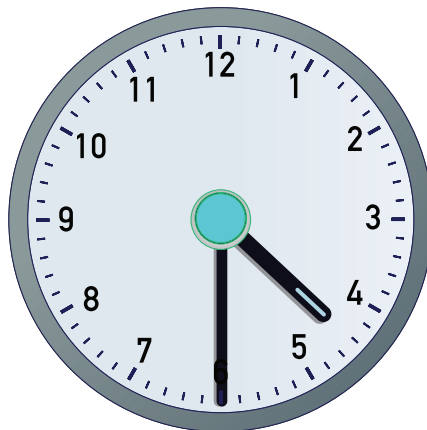


It is 11:45.

(It is 12:00 minus 15 minutes.)

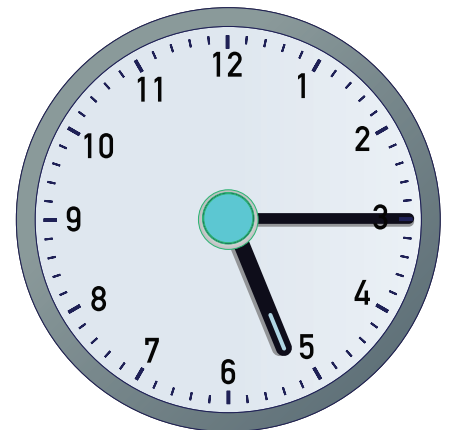


It is 1:00 o'clock.



It is 4:30.

(It is four and a half.)



It is 5:15.

(It is a quarter past 5:00.)
