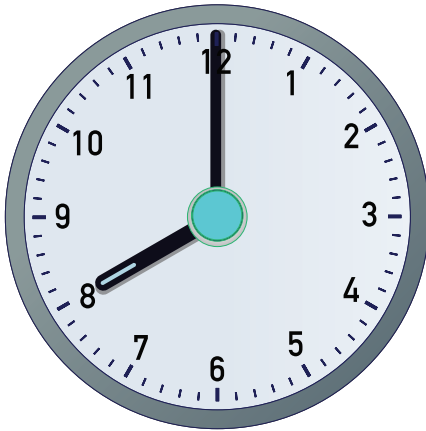


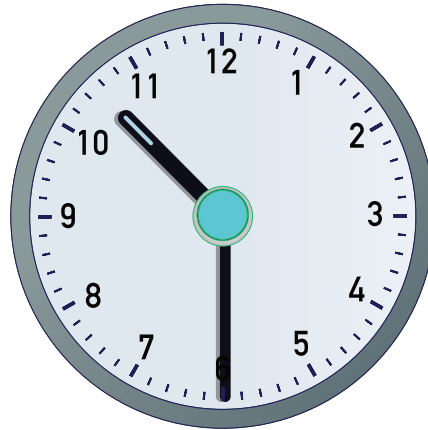
# Telling Time in Spanish Worksheet

Fill in the blanks with the times of day in Spanish.



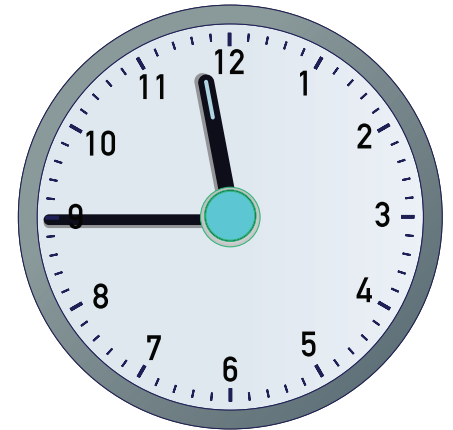
It is 8:00 o'clock.

Son las ocho



It is 10:30.

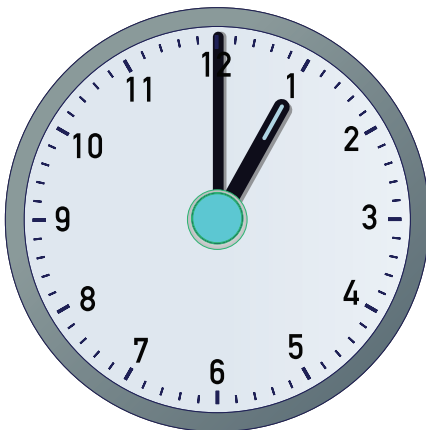
Son las diez y media



It is 11:45

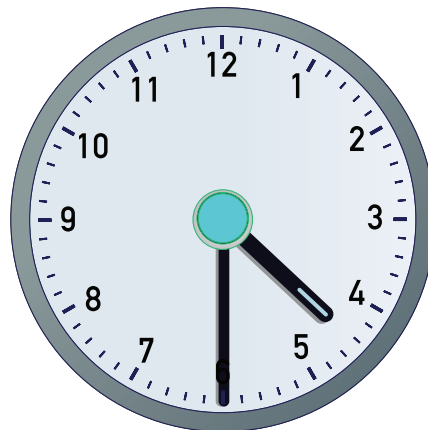
(It is 12:00 minus 15 minutes.)

Son las doce menos cuarto



It is 1:00 o'clock.

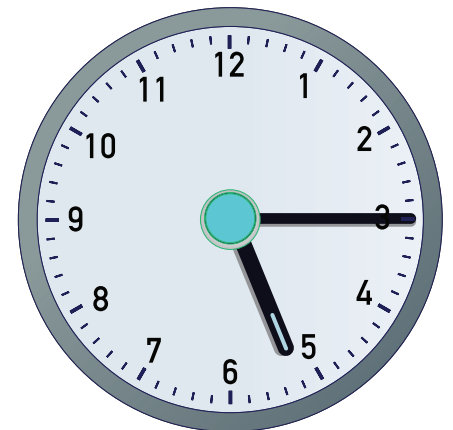
Es la una en punto



It is 4:30.

(It is four and a half.)

Son las cuatro y media



It is 5:15.

(It is a quarter past 5:00.)

Son las cinco y cuarto