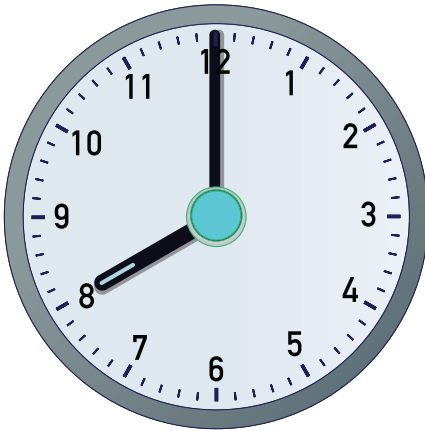


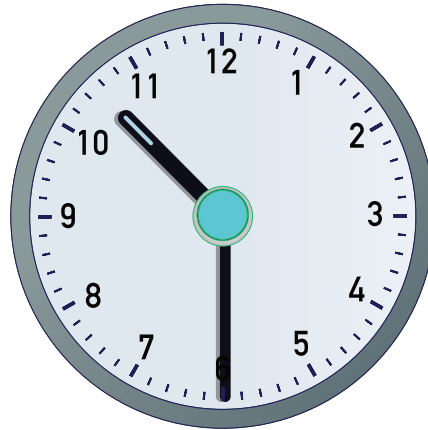
Telling Time in English Answer Key

Fill in the blanks with the times of day in English.



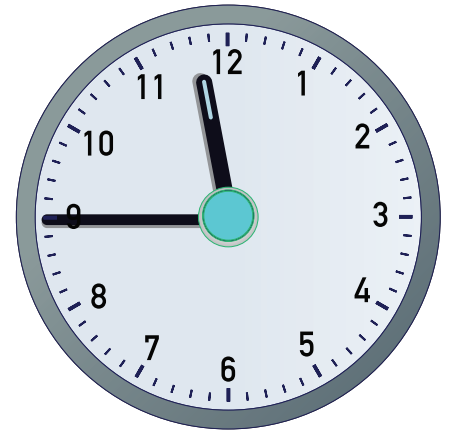
Son las ocho

It is 8:00 o'clock.



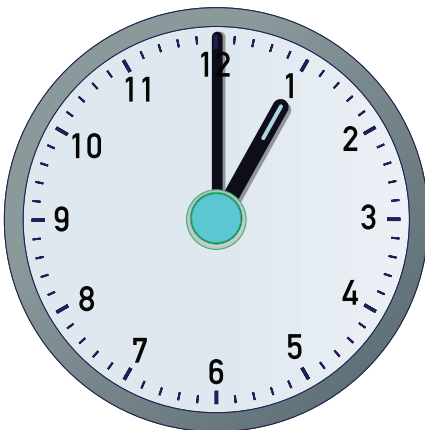
Son las diez y media

It is 10:30.



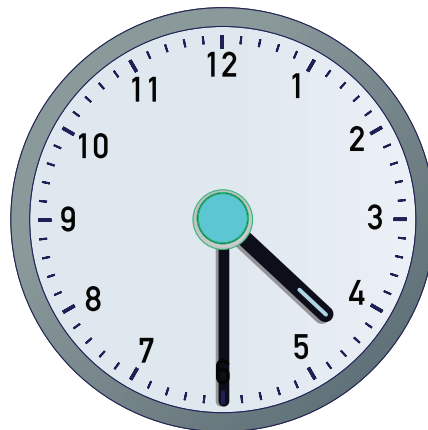
Son las doce menos cuarto

It is 11:45
(It is 12:00 minus 15 minutes.)



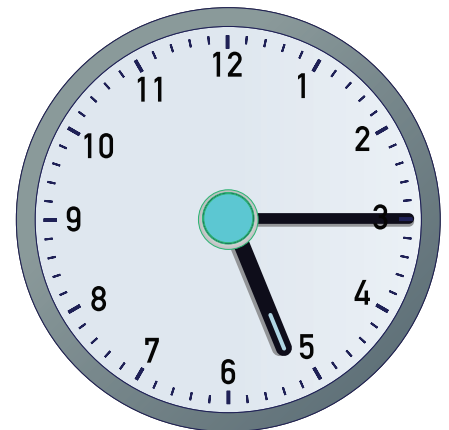
Es la una en punto

It is 1:00 o'clock.



Son las cuatro y media

It is 4:30.
(It is four and a half.)



Son las cinco y cuarto

It is 5:15.
(It is a quarter past 5:00.)